



**COMPANY**  
**PROFILE**  
**2023**



# TABLE OF CONTENTS

<b>ABOUT US</b>	<b>1</b>
<b>MISSION &amp; VISION</b>	<b>2</b>
<b>CORPORATE VALUES &amp; DATA</b>	<b>3</b>
<b>OUR SERVICES</b>	<b>4-5</b>
<b>OUR PRODUCTS</b>	<b>6-30</b>
<b>BOARD OF DIRECTOR AND CORPORATE OFFICER</b>	<b>31</b>
<b>CONSULTANTS</b>	<b>32</b>
<b>LIST OF COMPLETED PROJECT</b>	<b>33-39</b>
<b>LIST OF CLIENTS</b>	<b>40-41</b>
<b>COMPANY AFFILIATION</b>	<b>42</b>



# ABOUT US

Founded in April 27, 2003, Quezon City, Philippines, **MECHELEC PRODUCTS & SYSTEMS INC. (MPSI)**, is a 100% Filipino owned corporation registered with the Securities and Exchange Commission, set its foot as a Construction Firm and Trading Company in Electro-Mechanical industry. Over the years, the company has earned a reputation for excellence and professionalism for continuously striving to meet and even exceed standards which set the climate for a sustainable business relationship with its clients.

The birth of **MECHELEC PRODUCTS & SYSTEMS INC. (MPSI)**, has its rooster of professional staff and engineers which are skilled in their own field of expertise working cohesively to promote value added solutions, with a competitive pricing structure in the area of Electro-Mechanical Projects construction and installation industry. Our Major goal and objectives in Electro-Mechanical industry are as follows:

- ❖ To provide products of superior value in terms of quality and service.
- ❖ To establish a reputation as responsible and important partners of the customers / clients we serve.
- ❖ To provide full service and expertise in all areas of mechanical and electrical products and systems.

Likewise as an electrical solution specialist, **MECHELEC PRODUCTS & SYSTEMS INC. (MPSI)**, also offer electrical power products ranging from transformers, switch gears, breakers, XLPE cables, panel boards, power meters, and switches. The company also offers control products such as variable frequency drive, soft starters, UPS, AVR, batteries, motors and even lighting fixtures. It is also engage in electrical product installations, testing and commissioning, preventive maintenance, automation and energy saving solutions.

## MISSION

**MECHELEC PRODUCTS & SYSTEMS INC. (MPSI)**, is committed to providing the highest quality products and services exceeding our client's expectations. We shall continue to expand in equipment and facilities, and engage in training and certification programs to further serve customers with utmost excellence and professionalism. As we carry out our mission, we shall be guided by values of integrity, reliability, commitment, and collaboration.

Our commitment to service is to Delivering Results and Exceeding Expectations.

We aspire also to set the standard in construction, not to be "one of" in the industry but to be the industry.

## VISION

**MECHELEC PRODUCTS & SYSTEMS INC. (MPSI)**, firmly believes that there will be a never-ending need for products and services to harness and maximize its full potential and use.. In doing so, we will be the best-in-class provider of top notch electrical products and services. We will be recognized by our Customer, Employees, Suppliers and Industry.

# CORPORATE VALUES

Even while we embark on the roadmap that we have set ourselves, we seek to uphold the values that define the nature of our relationship with each other and with our stakeholders. Simply put they are:

- Integrity** : Our desire to stick to our commitments whatever the cost.  
**Excellence** : Our continuing drive to be the very best that we can be.  
**People** : Pools of talent that is looking for opportunities. We will provide an environment of Leadership and transparency.  
**Customer** : Exceeding expectations through win / win solutions.  
**Learning** : Constant change is a reality. Our plan is to thrive on it.  
**Community** : Our responsibility to build and enrich the community in which we operate.

# OUR CORPORATE DATA

- Business Address** : **(Manila Office)** Unit 511, Pasda Mansions Bldg. No. 77 Panay Ave., Cor. Timog Ave., Brgy. Paligsahan Quezon City, Philippines 1103  
: **(Olongapo Office)** Blk 20 Santol St., Gordon Heights, Olongapo City, Philippines 2200  
: **(Cebu Office)** 1885 F. Arcilla St., Mabolo, Cebu City, Philippines 6000  
**Phone Number** : (02) 8242-2599 / (02) 8242-3008 / (02) 8372-1549  
**E-mail Address** : mpsi\_qc@yahoo.com & mpsi\_subic@yahoo.com  
**SEC Registration No.** : CS200507074  
**TIN & VAT Number** : 238-171-775-000  
**Business Permit No.** : 05-006044  
**SSS Number** : 03-9074320-0


# OUR SERVICES

**MECHELEC PRODUCTS & SYSTEMS INC. (MPSI)** provides premier electro-mechanical and automation contracting and maintenance for public sectors and private customers in commercial, domestic and industrial markets.

Our electro-mechanical and automation services include project management, design, supply, installation, testing, commissioning and maintenance of electro-mechanical and automation systems.

As an electro-mechanical and automation services company, MPSI places great emphasis on its relationship with clients, private or commercial, and pride ourselves on the ability to respond to contracting requirements in an efficient and cost effective way.

## ELECTRICAL SERVICES

- 1. ELECTRICAL DESIGNS AND ESTIMATES**
  - 2. ELECTRICAL CONSTRUCTION AND INSTALLATION**
  - 3. ELECTRICAL EQUIPMENT TESTING AND COMMISSIONING**
  - 4. ELECTRICAL REPAIR WORKS**
  - 5. PREVENTIVE AND CORRECTIVE MAINTENANCE**
  - 6. STRUCTURED CABLING DESIGNS AND INSTALLATION**
  - 7. SWITCHGEAR UPGRADING AND RETROFITTING**
- 

# OUR SERVICES

## MECHANICAL SERVICES

1. MECHANICAL DESIGNS AND ESTIMATES
2. MECHANICAL CONSTRUCTION AND INSTALLATION
3. MECHANICAL REPAIR WORKS
4. PREVENTIVE AND CORRECTIVE MAINTENANCE
5. PIPING LAYOUT AND FABRICATION
6. FIRE DETECTION AND ALARM SYSTEM
7. HEATING VENTILATION AND AIR CONDITIONING
8. PROCESS PIPING
9. COOLING SYSTEM
10. SANITARY AND DRAINAGE
11. PLUMBING WORKS

## AUTOMATION SERVICES

1. PLC, HMI, SERVO PROGRAM AND TRAINING
2. VFD APPLICATION TRAINING
3. VFD REPAIR
4. SYSTEM DESIGN
5. SYSTEM INTEGRATION
6. PANEL BUILDING
7. SCADA AND HMI

# OUR PRODUCTS

## ELECTRICAL PRODUCTS

- 1. POLE LINE HARDWARES, CONCRETE POLES / STEEL POLES**
- 2. TRANSFORMERS** (Power, Distribution, Pad Mount and Dry Type Transformer)
- 3. HV, MV & LV CONDUCTORS, WIRES / CABLES** (XLPE Shielded, XLPE Insulated, XLPE Coated)
- 4. HV & MV FUSE CUT-OUT, LIGHTNING ARRESTERS AND POST INSULATORS**
- 5. HV & MV CURRENT TRANSFORMERS (CT) AND POTENTIAL TRANSFORMERS (PT)**
- 6. MOTOR CONTROL CENTERS, MAIN DISTRIBUTION PANEL, DISTRIBUTION PANEL, PANEL BOARDS, CIRCUIT BREAKERS, MAGNETIC CONTACTORS, MOTOR DRIVES**
- 7. HV & MV LOAD BREAK / AIR BREAK SWITCH**
- 8. WIRING DEVICES** (Switches, Convenient Outlets, Floor Outlets, Plates)
- 9. EXPLOSION PROOF LIGHTING FIXTURES AND WIRING DEVICES**
- 10. METAL / PVC CONDUIT AND FITTINGS**
- 11. CABLE TRAYS AND FITTINGS** (Powder Coated / Hot Dipped Galvanized)
- 12. ELECTRONIC KWH METERS, ADVANCE METERING STRUCTURE**
- 13. CCTV CAMERA AND SECURITY CAMERA SYSTEM**
- 14. SOLAR PANEL, STREET LIGHTS, SOLAR GARDEN LIGHTS**
- 15. BUSDUCTING MATERIALS & EQUIPMENT (C&S ELECTRIC LTD.)**
  - a. Isolated Phase Busduct (11 to 36kV up to 28000A) (Air cooled)
  - b. Segregated Phase Busduct (3.3 to 33kV up to 5000A)
  - c. Non-segregated Phase Busduct (415 to 1100V up to 5000A)
  - d. DC Busbar System.
- 16. HIGH/MEDIUM VOLTAGE CAPACITORS**



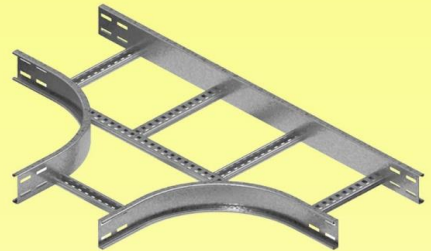
# OUR PRODUCTS

## AUTOMATION PRODUCTS

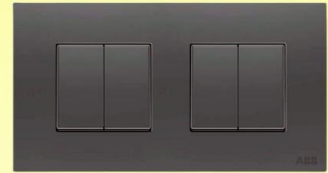
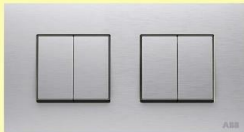
1. PROGRAMMABLE LOGIC CONTROLLER (PLC)
2. VARIABLE FREQUENCY DRIVE (VFD)
3. HUMAN MACHINE INTERFACE (HMI)
4. SERVO MOTORS (ROTARY, LINEAR AND DIRECT DRIVE MOTORS)
5. SCADA SOFTWARE AND SYSTEMS
6. BRAKE UNIT AND RESISTORS
7. WEIGHING CONTROLLER

# DEALER OF QUALITY & HIGH-END PRODUCTS

## CABLE TRAY



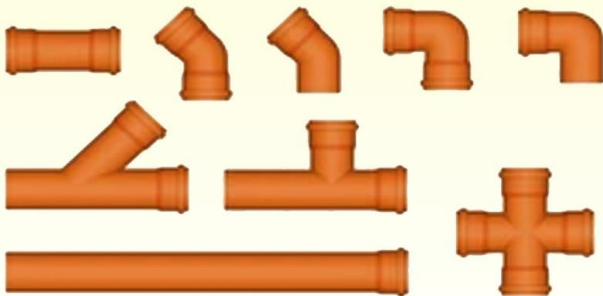
## SWITCHES



## OUTLETS



## PVC Pipes & Fittings



## IMC, EMT, RCS Pipes & Fittings



# DEALER OF QUALITY & HIGH-END PRODUCTS

## RELAYS



# DEALER OF QUALITY & HIGH-END PRODUCTS



**Pressure Transmitters and Sensors**



**Pressure Switches**

# DEALER OF QUALITY & HIGH-END PRODUCTS



## SOFT STARTERS



**MCD 600**

**VLT® Soft Starter**



**MCD 500**

**VLT® Soft Starter**



**MCD 201  
MCD 202**

**VLT® Compact Starter**



**MCD 100**

**VLT® Soft Start Controller**



# DEALER OF QUALITY & HIGH-END PRODUCTS



## LOW-VOLTAGE DRIVES



FC 360

VLT® AutomationDrive



FC 51

VLT® Micro Drive



FC 301  
FC 302

VLT® AutomationDrive



FC 103

VLT® Refrigeration Drive

# DEALER OF QUALITY & HIGH-END PRODUCTS

# LiOA

## Wires & Cables

- ✓ **Building Wires**
- ✓ **Communication Cables**
- ✓ **Low & Medium Voltage Power Cables**
- ✓ **Fire Resistant & Flame Retardant Cables**
- ✓ **Control Cable**



# DEALER OF QUALITY & HIGH-END PRODUCTS

# LiOA



## **AUTOMATIC VOLTAGE STABILIZER POWER TRANSFORMER**



# DEALER OF QUALITY & HIGH-END PRODUCTS



## INDUSTRIAL LIGHTS



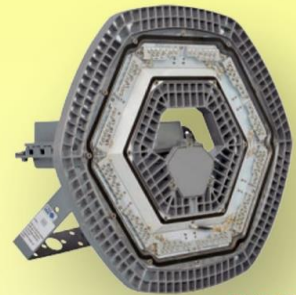
**ZY8606** **300W**

Industrial Projecting Lights



**TSL-200SA1** **200W**

TSL Industrial Projecting Lights



**BC9700** **200W**

3D Industrial Lights



**ZY8702** **250W**

Street Lights



**TSL-150SA1** **150W**

TSL Industrial Projecting Lights



**ZY8605SLC** **240W**

Industrial Projecting Lights(seismic resistance)

# DEALER OF QUALITY & HIGH-END PRODUCTS



## HAZARDOUS LOCATION LIGHTS



**BC9309S1-L480** **480W**  
BC 9309 Series  
Explosion Proof Lights

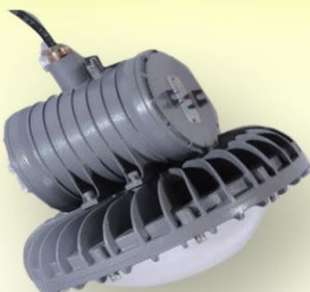


**BC9700-L150** **150W**  
BC 9700 Series  
Explosion Proof  
Street Lights d type



**BC9700-L200** **200W**  
BC 9700 Series  
Explosion Proof Lightsx d type

## EXPLOSION PROOF LIGHTS



**EW1208K30C** **120W**  
BLD Series  
Explosion Proof



**EW0363K50** **36W**  
Hazardous Location Lights  
nA type



**BC5402B-L60** **60W**  
BC 5402 Series  
Explosion Proof Lights

# DEALER OF QUALITY & HIGH-END PRODUCTS



## COMMERCIAL LIGHTS/OFFICE LIGHTS



**TL5243K57 3x8W**  
Recessed T-BAR Lights  
2 feet x 3 Tubes



**TP2401K40 40W**  
Aside Type  
Panel Lights



**TL0162K57 2x16W**  
BC 9700 Series  
Explosion Proof Lights x d type



**MZ0162K30 120W**  
Direct Type  
Downlights



**KP5162K57 2x8W**  
Recessed Lights  
2 feet



**AP0051KXXC 5.5W**  
MR16 Lamp



# DEALER OF QUALITY & HIGH-END PRODUCTS



## MEDIUM VOLTAGE AC (ABB DRIVES)



Medium Voltage AC Drives for a Wide Range of Applications



Legacy drives - Low voltage AC



Medium Voltage AC Drives

# DEALER OF QUALITY & HIGH-END PRODUCTS



## MEDIUM VOLTAGE SOFT STARTERS

2.3 to 13.8 kv  
up to 15,000HP / 12,000 kW



# DEALER OF QUALITY & HIGH-END PRODUCTS



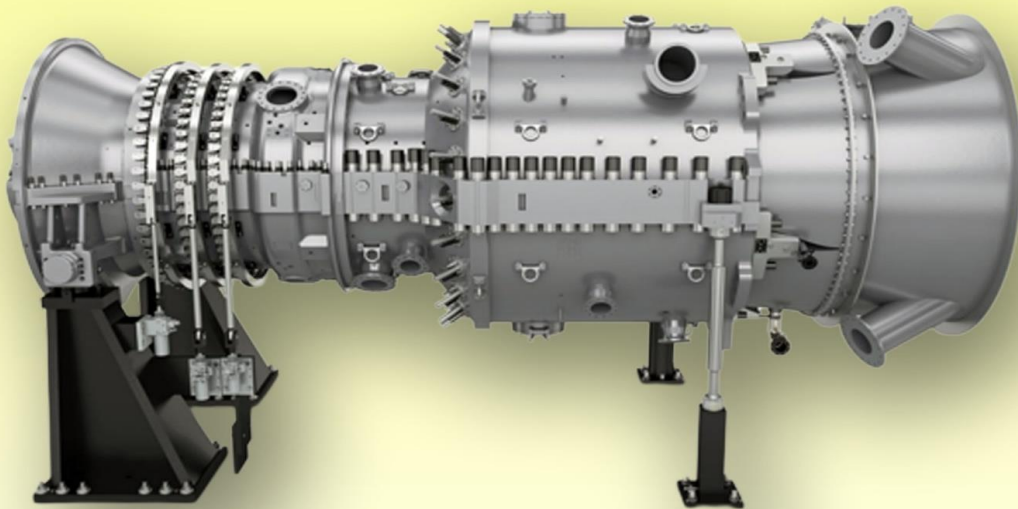
## ELECTRONIC MOTOR BRAKES



# DEALER OF QUALITY & HIGH-END PRODUCTS

# SIEMENS

## Gas Turbine



## Voltage Relay





# DEALER OF QUALITY & HIGH-END PRODUCTS



## Switches





# DEALER OF QUALITY & HIGH-END PRODUCTS



**Telemecanique**

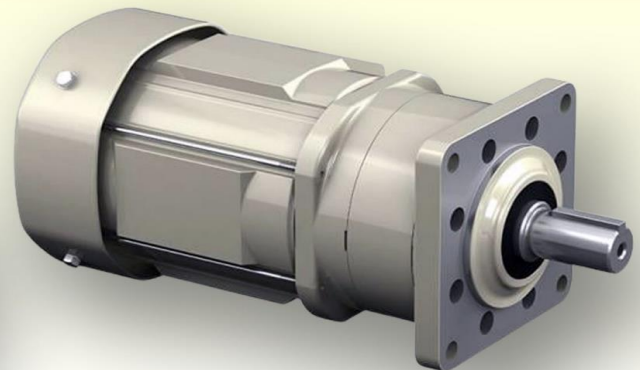
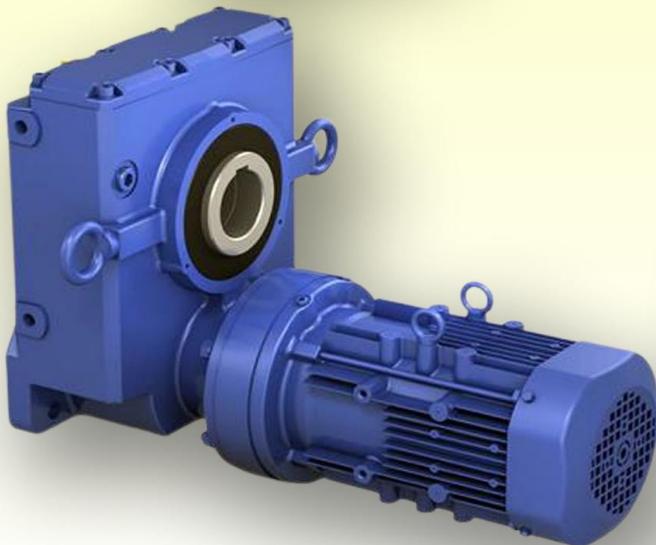
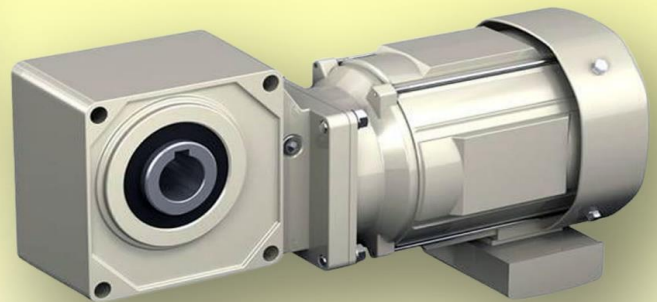
## Limit Switches



# DEALER OF QUALITY & HIGH-END PRODUCTS

Sumitomo Drive Technologies

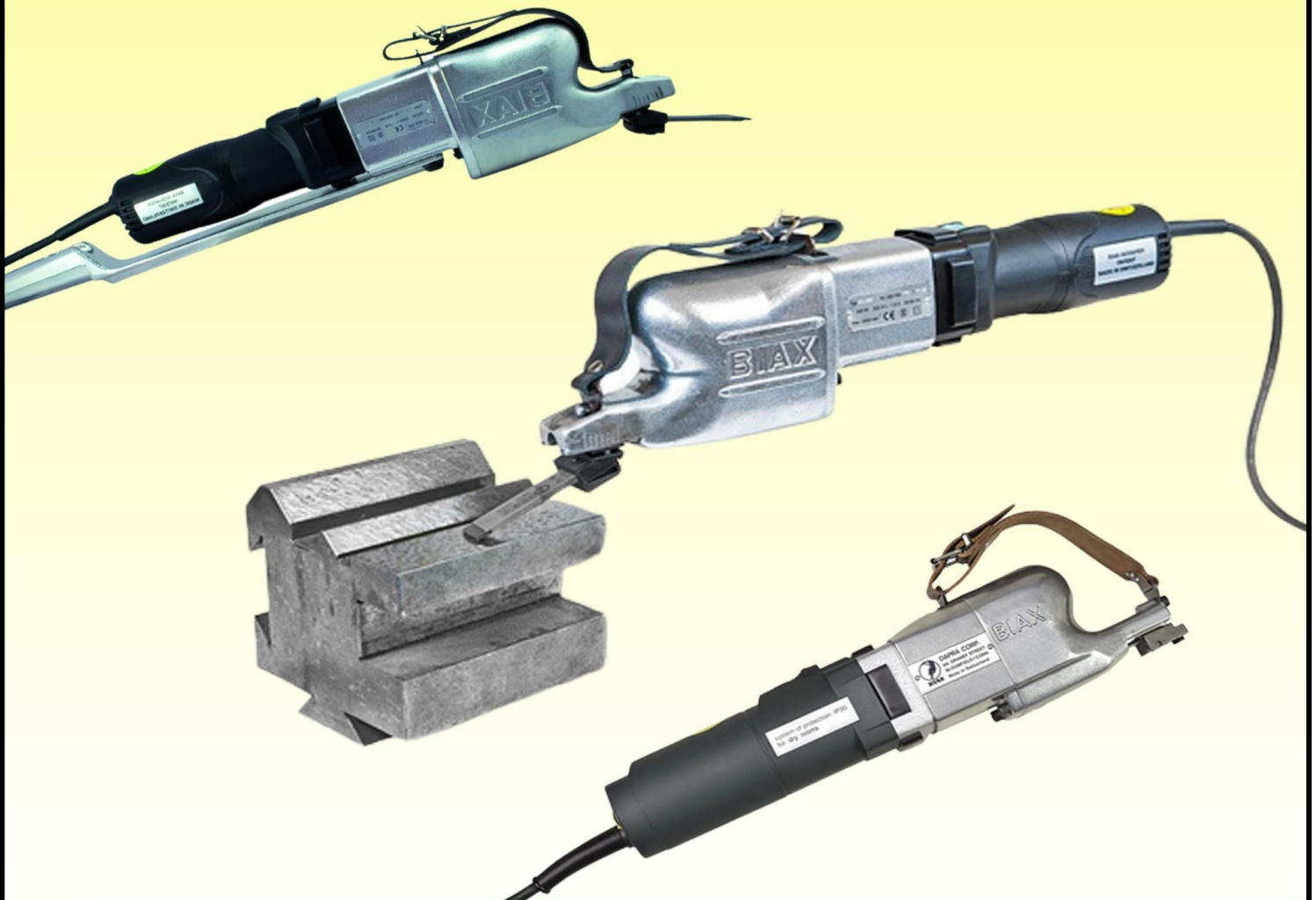
## Gearmotors



# DEALER OF QUALITY & HIGH-END PRODUCTS



## Power Scrapers





# DEALER OF QUALITY & HIGH-END PRODUCTS



## LIST OF PRODUCTS SUPPLIED TO SAN MIGUEL FOR THE PAST 3 YEARS

### 1. LED STREET LIGHT – SR SERIES

- Wattage – 80w / 120w / 150w / 200w
- Application – Street Lighting / Perimeter Lights

#### QUANTITY SOLD:

80w – 1,117 units  
 120w – 769 units  
 150w - 15 units  
 200w - 12 units



CUSTOMER	80W LED STREET LIGHT	120W LED STREET LIGHT	150W LED STREET LIGHT	200W LED STREET LIGHT
TPLEX	387			
CITRA / SKYWAY	729	769		
PETRON REFINERY	1			10
PETRON DEPOT MISAMIS				2
PETRON POLYPROPYLENE			15	
<b>TOTAL</b>	<b>1,117</b>	<b>769</b>	<b>15</b>	<b>12</b>



## LIST OF PRODUCTS SUPPLIED TO SAN MIGUEL FOR THE PAST 3 YEARS

### 1. UNDER CANOPY LED LIGHTS

- Wattage – 120w / 150w
- Application – Toll Plaza / Petron Gas Station

#### QUANTITY SOLD:

120w – 1,789 units  
 150w – 490 units

CUSTOMER	120w LED UNDER CANOPY LIGHTS	150w LED UNDER CANOPY LIGHTS
PETRON GAS STATION	1,789	
SKYWAY/NAIA X TOLL		480
STAR TOLL WAY		10
<b>TOTAL</b>	<b>1,789</b>	<b>490</b>



# DEALER OF QUALITY & HIGH-END PRODUCTS



## LIST OF PRODUCTS SUPPLIED TO SAN MIGUEL FOR THE PAST 3 YEARS

### 1. LED FLOOD LIGHT

- Wattage – 100w / 150w
- Application – Perimeter Lighting

**QUANTITY SOLD:**  
100w – 193 units



CUSTOMER	100w LED FLOOD LIGHT
PETRON GAS STATION	98
SAN MIGUEL FOODS INC	70
PETRON REFINERY	25
<b>TOTAL</b>	<b>193</b>

## LIST OF PRODUCTS SUPPLIED TO SAN MIGUEL FOR THE PAST 3 YEARS

### 1. LED UNDER CARRIAGE LIGHT

- Wattage – 100w
- Application – Under Carriage Light

**QUANTITY SOLD:**  
100w – 144 units



CUSTOMER	120w LED UNDER CARRIAGE LIGHT
SKYWAY	144
<b>TOTAL</b>	<b>144</b>



# DEALER OF QUALITY & HIGH-END PRODUCTS



## LIST OF PRODUCTS SUPPLIED TO SAN MIGUEL FOR THE PAST 3 YEARS

### 1. LED HIGH BAY LIGHTS

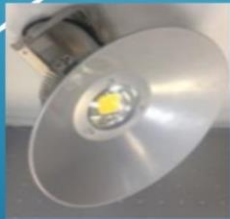
- Wattage – 100w / 150w / 200w
- Application – Warehouse Lighting

#### QUANTITY SOLD:

100w – 171 units  
 150w – 88 units  
 200w – 20 units



CUSTOMER	100w LED High Bay Lights	150w LED High Bay Lights	200w LED High Bay Lights
SAN MIGUEL MILLS		88	
SAN MIGUEL FOODS INC	70		
PETRON POLYPROPYLENE			20
SAN MIGUEL LOGISTIC	171		
<b>TOTAL</b>	<b>171</b>	<b>88</b>	<b>20</b>



## LIST OF PRODUCTS SUPPLIED TO SAN MIGUEL FOR THE PAST 3 YEARS

### 1. LED EXPLOSION PROOF LIGHT

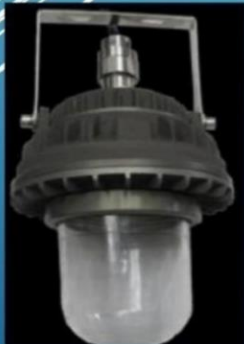
- Wattage – 30w / 40w
- Application – Refinery / Hazardous Area

#### QUANTITY SOLD:

30w – 111 units  
 40w – 190 units






CUSTOMER	30w LED Explosion Proof Light	40w LED Explosion Proof Light
PETRON POLYPROPYLENE	6	2
PETRON BATAAN REFINERY	105	188
<b>TOTAL</b>	<b>111</b>	<b>190</b>



# DEALER OF QUALITY & HIGH-END PRODUCTS

## Mitsubishi PLC

ADVANCE	STANDARD	BASIC
		
R-Series	Q-Series	FX-Series
Modular Performance	Modular Scalable	Compact Efficient

## Mitsubishi VFD

Mitsubishi A Series Mitsubishi D Series Mitsubishi E Series Mitsubishi F Series	
	Empowering Innovators 

## Mitsubishi HMI

		Mitsubishi GOT 1000 & GOT 2000
---	---	-----------------------------------



# DEALER OF QUALITY & HIGH-END PRODUCTS

## Mitsubishi Servo

MR-J4 Series  
MR-JE Series  
MR-J3 Series



## MyDesigner7 SCADA System

*MyDesigner7 SCADA System is the SCADA Software we utilize due to its Scalability, Product Support, it is a powerfull SCADA Software, and Compatibility.*

*Control and Interface your Machine or Process with your Smartphone and Computer wirelessly.*

We make SCADA for any kind of devices





# OUR BOARD OF DIRECTOR AND CORPORATE OFFICER

## BOARD OF DIRECTOR

<b>MICHAEL JULIUS P. ROLDA</b>	- CEO / CHAIRMAN
<b>NAPOLEON Z. MANAOIS JR., REE</b>	- COO
<b>EDGARDO A. SORIANO</b>	- FINANCIAL CONTROLLER / CORPORATE SECRETARY / LEGAL ADVISER
<b>RENERIE G. GUILLERMO, ECE</b>	- OFFICE MANAGER Q.C. / PROCUREMENT MANAGER

## CORPORATE OFFICER

<b>RAMIL A. PARCON</b>	- CHIEF ENGINEER ON OPERATIONS
<b>EDGAR AGLIAM, PME</b>	- MANAGER, MECHANICAL DEPARTMENT
<b>FERDINAND Q. MATEO</b>	- VP OPERATION ON SPECIAL PROJECT
<b>JOHN MICHEAL P. ROLDA</b>	- ADMIN DOCUMENT CONTROLLER
<b>LORRAINE S. ROLDA</b>	- EXECUTIVE ASSISTANT
<b>PATRICK KENT R. TORRES</b>	- ADMIN ENGINEER
<b>NOEL P. ANGELES, PEE</b>	- MANAGER, ENGR. OPERATION (VIS MIN AREA)
<b>EMMANUEL S. ILAN</b>	- PROJECT MANAGER CIVIL AND STRUCTURAL PROJECTS
<b>VALENTINA C. GABISON</b>	- MARKETING / SALES MANAGER, CEBU SUB-OFFICE
<b>JOVEN CHRIS P. PARUNGAO</b>	- OPERATION AND PROJECT MANAGER
<b>DANICA FEL M. LOVERIZA</b>	- I.T. OFFICER / ADMIN ASSISTANT
<b>JUVELYN VILLANUEVA</b>	- H.R. ASSISTANT
<b>ADRIANNE RITZ L. ROLDA</b>	- COMPANY NURSE
<b>JOSEPH V. MAPANOO</b>	- SALES ENGINEER
<b>ANTOLIN N. TUBINO JR.</b>	- CREATIVE MANAGER

# CONSULTANTS

- ALVIN M. FARRALES, PEE - ELECTRICAL / AUX PROJECTS CONSULTANT
- RODOLFO J. RENOLLA, PEE/MP - MEPF PROJECTS CONSULTANT
- RAMON M. JUNSAY, PEE - ELECTRICAL PROJECTS CONSULTANT
- JUBERT M. LLAUDERES, PME - MECHANICAL PROJECTS CONSULTANT
- ERICO O. BUCOY - POWER AND ENERGY PROJECTS CONSULTANT
- REYNALDO A. LOGA - CIVIL AND STRUCTURAL WORKS PROJECTS CONSULTANT
- ROGELIO F. LUNA, REE - BUSINESS PROJECT DEVELOPMENT CONSULTANT
- VOLTAIRE REX C. CASTRO - MARKETING AND FINANCE CONSULTANT

# LIST OF COMPLETED PROJECTS

CLIENT	DESCRIPTION
Central Negros Electric Cooperative, Inc. (CENECO)	Supply of Stanford Generator Set 156.25 kVA, 480 / 240 V, 3 phases, 60 Hz. 188 amps.
Zambales Electric Cooperative II, Inc. (ZAMECO II)	Supply of 2 units Siemens Multifunction Over current Relay
Pampanga Electric Cooperative II, Inc. (PELCO II)	Supply of six pcs. SMU-20-200E Power Fuse
Cagayan Electric Cooperative II, Inc. (CAGELCO II)	Supply of 6 units Lightning Surge Arrester, Station Class, Duty Cycle,
Cagayan Electric Cooperative II, Inc. (CAGELCO II)	Supply of 50 assy. Cut-out, 15 Kv 8 kA, with Surge Arrester, 10 kV,
INGASCO, INC.	Supply of 1110 meters. MV Cable, 8.7/15 (17.5 kV), IEC 60502, 1C x 500 mm <sup>2</sup> . CU/XLPE/CTS/PVC
Teresa Crew Gold (Phils.) Inc.	Supply of Power Cables 1000 m – 4C x 25 mm <sup>2</sup> , 1000 m – 4C x 240 mm <sup>2</sup> , 1000 m – 4C x 120 mm <sup>2</sup>
Danfoss, Inc.	Maynilad Project – Supply & Installation Of MCC, ATS & Switchgear
Danfoss, Inc.	Supply of Nema 3R Enclosure, MCCB, Contactors, Relays and accessories Filinvest Project
Danfoss, Inc.	Supply of Nema 12 Enclosure, MCCB, Contactors, Relays, and accessories Filinvest Project
Bacolod City Water District	Supply of Digital Tester with Capacitance & Frequency Test
Zambales Electric Cooperative II, Inc. (ZAMECO II)	Supply, Delivery, Installation, Testing & Commissioning of two (2) 10 MVA Power Substation
	Supply of Materials and Labor
	Repair / Rehabilitation of one (1) unit 5MVA Substation Transformer.
Cepalco Energy Services & Trading Cooperative (CESTCO)	Supply of SF6 Circuit Breaker
Bacolod Water District (BACIWA)	Supply of Materials
Zambales Electric Cooperative II, Inc. (ZAMECO II)	Construction of 13.2kV, Three-phase Circuit
Care of Power Star Inc. Mariveles, Bataan	Petron Service Station
First Farmers Holding Corporation	1 Lot Supply of Labor, Tools, Materials, and Supervision for the Installation of Air Break Switch and 78-span 69kV Transmission line and Sub-Station Equipment
Petron-Bataan Refinery	Proposed Supply and delivery of High Voltage Electrical Equipment for BP04-0016 and Installation of 230KV Substation for PBR
Petron-Bataan Refinery	Proposed Supply and Installation of Distribution Lines (69 KV) from BTPP (NGCP) to Petron-Bataan Refinery (PRB)
Sparrow Hawk Construction Sagay City, Negros Occidental	Modern Slaughter House Electrical and Mechanical Works
Ingasco, Inc.	Supply of Magnetic XLPE Cable
APEX Mining Co., Inc.	Supply of XLPE Cable
Cepalco Energy Services & Trading Cooperative (CESTCO)	Supply of 20 Pcs. Sub-station Batteries
San Carlos Bio-energy	Supply of 300 meters Royal Cord
Zambales Electric Cooperative II, Inc. (ZAMECO II)	Installation of equipment structure, mounting of electrical structure, mounting of structures and civil works.
Philippine Coastal Storage and Pipeline Corporation	Supply and Delivery of 1MVA Pad Mounted Transformer
The Enterprise Building	Dismantling and installation of new 2.5MVA Power Transformer
Armed Forces and Police Mutual Benefit Association, Inc.	Supply and Installation of Discharge Duct

# LIST OF COMPLETED PROJECTS

CLIENT	DESCRIPTION
ASIAPHIL Manufacturing Industries, Inc.	Installation of electrical equipment and structure, construction of equipment foundation, construction of control house, perimeter fence including civil works.
Marinduque Electric Cooperative, Inc. (MARELCO)	Supply, Delivery, Installation, Testing & Commissioning of Substation. 5MVA, 69/13.2 KV Substation
Quezon Electric Cooperative II, Inc. (QUEZELCO II)	Supply, Delivery, Installation, Testing & Commissioning of Substation. 5MVA, 69/13.2 KV Substation
Cagayan Electric Cooperative I, Inc. (CAGELCO I)	Supply, Delivery, Installation, Testing & Commissioning of Substation. 15/18.75MVA, 69/13.2KV
Zambales II Electric Cooperative, Inc. (ZAMECO II)	Rehabilitation of 5MVA, 69/13.2 KV Substation
Zambales II Electric Cooperative, Inc. (ZAMECO II)	Supply, Delivery, Installation, Testing & Commissioning of Substation. 5MVA, 69/13.8 KV Substation
Zambales II Electric Cooperative, Inc. (ZAMECO II)	Supply, Delivery, Installation, Testing & Commissioning of Substation. 10MVA, 69/13.8 KV Substation
Cagayan Electric Cooperative II, Inc. (CAGELCO II)	Rehabilitation of 5MVA Substation
Central Negros Electric Cooperative (CENECO)	Supply, Delivery, Installation, Testing & Commissioning of Substation. 30MVA, 69/13.2 KV Substation
METAPHIL, INC.	Process Flow, Piping and Instrumentation Design Plan
San Carlos Bio-energy	Supply of 30KVA POWEREX AVR
Edell Enterprises	Supply of 2 units of Shot gun stick
Philippine Coastal Storage and Pipeline Corporation	Supply and Delivery of 1MVA Pad Mounted Transformer
AFP-MBAI Col. BoniSerrano Rd cor. EDSA, Quezon City	Preventive Maintenance Electrical System
Philippine Coastal Storage and Pipeline Corporation	Design and Construction of Maritan Hill Tank Farm & its related Facilities Phase III
Steel Asia, Davao Bar Mill Project	Cable Tray, Power Cable Installation
MB Century Drilling & Energy Services (NZ) Ltd. c/o S N ABOITIZ Power-Magat, Inc. Magat Hydroelectric Power Plant	Preparation of Plans, Drawings and Documentation including signed & sealed for permitting for MARIIS Optimization Project Weir Upgrade, Ramon, Isabela
AFP-MBAI Col. BoniSerrano Rd cor. EDSA, Quezon City	Generator Set Repair
Zambales II Electric Cooperative, Inc.	Preventive Maintenance of 10MVA Substation 69/13.8kV
MB Century Drilling & Energy Services (NZ) Ltd. c/o S N ABOITIZ Power-Magat, Inc. Magat Hydroelectric Power Plant	Supply of labor, materials, tools, equipment, technical supervisor for the fabrication of Workshop Trolley for MARIIS Optimization Project Weir Upgrade, Ramon, Isabela
MB Century Drilling & Energy Services (NZ) Ltd. c/o S N ABOITIZ Power-Magat, Inc. Magat Hydroelectric Power Plant	Supply & Fabrication of Shims, Spacer & Washers for MARIIS Optimization Project Weir Upgrade, Ramon, Isabela
MB Century Drilling & Energy Services (NZ) Ltd. c/o S N ABOITIZ Power-Magat, Inc. Magat Hydroelectric Power Plant	Supply of conveyor rubberize belt, 200 mm x 40 meters, 3 ply for MARIIS Optimization Project Weir Upgrade, Ramon , Isabela
Unilever Philippines 1351 United Nations Avenue, Paco, Manila Philippines 1007	Preventive Maintenance and Oil Leak Correction of Distribution Transformer banks ( 3x50 + 3x100 KVA) at Unilever, Paco
Unilever Philippines 1351 United Nations Avenue, Paco, Manila Philippines 1007	Preventive Maintenance and Oil Leak Correction of 2x1000 KVA Power Transformer at Unilever, Las Piñas Warehouse
Philippine Resins Industries, Inc.	Supply, Fabrication and Delivery of Steel Door
Laguna Water, Sta. Rosa, Laguna c/o Controtek Solution	Conduiting/Piping cable layout works at Booster Pump House no. 1, 2 and 3 RE: Scada Works

# LIST OF COMPLETED PROJECTS

CLIENT	DESCRIPTION
MB Century Drilling & Energy Services (NZ) Ltd. c/o S N ABOITIZ Power-Magat, Inc. Magat Hydroelectric Power Plant	Supply, Install, Security Fencing, Electrical Works and Handrails MARIIS Optimization Project Weir Upgrade, Ramon , Isabela
Philippine Coastal Storage and Pipeline Corporation c/o METAPHIL (Aboitiz Construction group Inc.)	Maritan Hill Tank Farm and its related facility, Supply and Installation of Electrical Material works. SBFZ, SUBIC ZAMBALES
Unilever Philippines 1351 United Nations Avenue, Paco, Manila Philippines 1007	Preventive Maintenance and Oil Leak Correction of 2x1000 KVA Power Transformer at Unilever, Las Piñas Warehouse
Lima Phase 1A Block (A,B,C,D,E,F,G,H & Feeders)	Electrical, Communications, ESS, Fire Supply, Plumbing, HVAC and Modification of Sprinkler System
Philippine Coastal Storage & Pipeline Corporation Bldg. 1428, POL Pier Compound, Argonaut Hi-way SBFZ, Philippine	Preventive Maintenance of 1500 and 2000KVA Power Transformer ( Boton Tank Farm Area )
Philippine Coastal Storage & Pipeline Corporation Bldg. 1428, POL Pier Compound, Argonaut Hi-way SBFZ, Philippine	P181320 LR2 Rewiring & Upgrading of MCC BLDG. & Transformer Yard At Boton Plant, Subic, Zambales
Philippine Coastal Storage & Pipeline Corporation Bldg. 1428, POL Pier Compound, Argonaut Hi-way SBFZ, Philippine	P181320 LR2 Rewiring & Upgrading of MCC BLDG. & Transformer Yard At Boton Plant, Subic, Zambales (Addendum)
Philippine Coastal Storage & Pipeline Corporation Bldg. 1428, POL Pier Compound, Argonaut Hi-way SBFZ, Philippine	Supply and Installation of 100HP Motor Pump Cabling, Retrofitting of MCC Panel and Extension of 5HP Motor Cabling at LR2, Boton Plant
Philippine Coastal Storage & Pipeline Corporation Bldg. 1428, POL Pier Compound, Argonaut Hi-way SBFZ, Philippine	Supply of Labor, Tool, Equipment & Technical Know-How for The Thermal Scanning of Electrical Equipment, Motors Controls & Pumps At LR2 MCC
Philippine Coastal Storage & Pipeline Corporation c/o Aboitiz Construction Inc.	TTLR Repair At Boton Tank Farm, Subic, Zambales
Monte Zion Diagnostic and Medical Center Corporation GrndFlr, ICC-MTC Building 699 Tandang Sora Ave., Q.C.	Medical Facility For Overseas Workers and Seafarers (Plans Preparation, Supply And Installation Works of Electrical/Auxilliary)
Philippine Coastal Storage & Pipeline Corporation Bldg. 1428, POL Pier Compound, Argonaut Hi-way SBFZ, Philippine	Supply, Delivery and Oil Filling Of New Transformer Insulating Oil At LR2 Boton Tank Farm, Subic, Zambales
Laguna Water System c/o Controtek Solution, Ayala Greenfield Estate Calamba, Laguna	Supply and installation of power cable laying of control cables for the upgrading of Laguna Water Motor Control System
Philippine Coastal Storage & Pipeline Corporation Bldg. 1428, POL Pier Compound, Argonaut Hi-way SBFZ, Philippine	Proposed Construction of Storage Tanks and Related Facilities, Phase III Electrical Works Maritan Hill Tank Farm SBFZ, Subic, Zambales
Philippine Coastal Storage & Pipeline Corporation Bldg. 1428, POL Pier Compound, Argonaut Hi-way SBFZ, Philippine	Supply of Labor, Tools, Equipment & Consumables to perform PMS & Testing of PAD MOUNTED Transformer, MVSG & Load Break Switch At Maritan Tank Farm
Philippine Coastal Storage & Pipeline Corporation Bldg. 1428, POL Pier Compound, Argonaut Hi-way SBFZ, Philippine	Construction of Storage Tanks and Related Facilities, Phase III Electrical Works Maritan Hill Tank Farm SBFZ, Subic, Zambales (Addendum)
Philippine Coastal Storage & Pipeline Corporation Bldg. 1428, POL Pier Compound, Argonaut Hi-way SBFZ, Philippine	Supply and Installation of 2-7.5HP, 20HP, 25HP, 30HP & 40HP Motor Power Supply
Prime BMD Project – 16th Flr. Three E-Com center, Bayshore cor. Ocean Drive, Blk.21, Mall of Asia Complex, Pasay City	Supply and Delivery of Power Cables LiOA Brand, Cu/XLPE/PVC/SWA/Fr-PVC, 0.6/1(1.2KV), IEC 60502-1 Standard & Cu/XLPE/Fr-PVC, 0.6/1(1.2KV), IEC 60502-1 Standard at Prime BMD Project Site, Upper Wawa Pumping Station, Purok 6, Sitio Paikulan, Brgy. Calawis, Antipolo City
Philippine Coastal Storage & Pipeline Corporation Bldg. 1428, POL Pier Compound, Argonaut Hi-way SBFZ, Philippine	Construction of Additional MCC Building, Transformer Yard and Supply and Installation of Motors of RON-88 Project at LR2 Boton Tank Farm, PCSPC, SBFZ, Subic Zambales



# COMPLETED PROJECTS



## 10MVA Cabuaan, San Narciso, Zambales (Zameco II)

⚙️ Preventive Maintenance of 10MVA Substation  
69/13.8kV

APRIL 2012



## 10 MVA 69-13.8KV Substation (Zameco II Project)

⚙️ Supply, Delivery, Installation, Testing &  
Commissioning of two (2) 10 MVA Power Substation

JUNE 2012



## Davao Bar Mill (Steel Asia) (Aboitiz Project)

⚙️ Cable Tray and Power Cable Installation

MAR 2013



## Maritan Hill Tank Farm Phase I, 7-Tanks (Aboitiz Project)

⚙️ Design and Construction of Maritan Hill Tank Farm &  
its related Facilities.

APRIL 2014

# COMPLETED PROJECTS



## MARIIS Dam Optimization Project (MBC Project)

- Supply, Installation and Technical Supervision on Security Fencing, Handrails and Electrical Works

MAY 2016



## Maritan Hill Tank Farm Phase II, 3-Tanks (Aboitiz Project)

- Design and Construction of Maritan Hill Tank Farm & its related Facilities.

JUNE 2017



## LIMA OUTLET (PHASE 1-A) (Aboitiz Project)

- Electrical, Communications, ESS, Fire Suppression, Plumbing and HVAC Works

SEPT 2018



## Boton Hill Relocation of First Private Pole, Cabling, Testing & Commissioning

- Supply and Installation of 100HP Motor Pump Cabling, Retrofitting of MCC Panel and Extension of 5HP Motor Cabling

DEC 2018

# COMPLETED PROJECTS



## Boton Hill LR2 Rewiring and Upgrading of MCC Bldg. and Transformer Yard

- ⚙️ P181320 LR2 Rewiring & Upgrading of MCC BLDG. & Transformer Yard

FEB 2019



## Maritan Hill Tank Farm Phase III, 9-Tanks (Aboitiz Project)

- ⚙️ Design and Construction of Maritan Hill Tank Farm & its related Facilities.

OCT 2020



## Trafigura Project Supply, Installation, Cabling, Testing & Commissioning

- ⚙️ Supply and Installation of 2-7.5HP, 20HP, 25HP, 30HP & 40HP Motor Power Supply

AUG 2021



## Prime BMD Project Supply and Delivery of Power Cables

- ⚙️ Supply and Delivery of Power Cables LiOA Brand, Cu/XLPE/PVC/SWA/Fr-PVC, 0.6/1(1.2KV), IEC 60502-1 Standard & Cu/XLPE/Fr-PVC, 0.6/1(1.2KV), IEC 60502-1 Standard

AUG 2022



# COMPLETED PROJECTS



## RON-88 Project Supply, Installation, Cabling, Testing & Commissioning

- Construction of Additional MCC Building, Transformer Yard. Supply and Installation of Motors

OCT 2022



## Maritan Hill Tank Farm Phase I & II Preventive Maintenance

- Preventive Maintenance and Testing of Substation Electrical Equipment with FURAN Analysis

NOV 2022

# LIST OF CLIENTS



ZAMECO II ELECTRIC COOPERATIVE



LINDE PHILIPPINES, INC.



MB CENTURY DRILLING & ENERGY SYSTEM



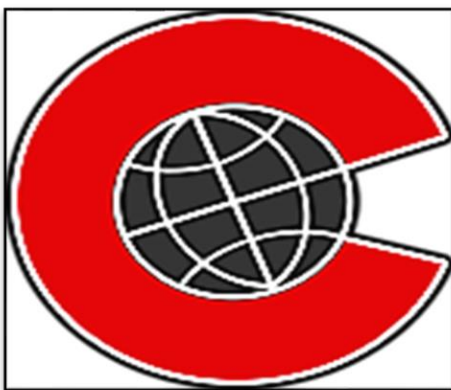
ARMED FORCES AND POLICE MUTUAL BENEFIT ASSOCIATION, INC.



LAGUNA WATER SYSTEM



ABOITIZ CONSTRUCTION, INC.



PHILIPPINE COASTAL STORAGE & PIPELINE CORPORATION



UNILEVER PHILIPPINES



INGASCO PHILIPPINES

# LIST OF CLIENTS



NATIONAL ELECTRIFICATION  
ADMINISTRATION



METAPHIL INCORPORATED – CEBU



CAGAYAN I ELECTRIC COOPERATIVE,  
INC. (CAGELCO I)



CAGAYAN II ELECTRIC COOPERATIVE,  
INC. (CAGELCO II)



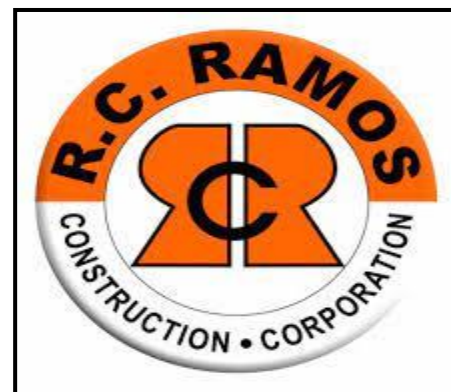
DANFOSS, INC.



FIRST FARMERS HOLDING  
CORPORATION



SN Aboitiz Power Group



RRQ CONSTRUCTION, INC.

# COMPANY AFFILIATION

## **Synergy Drives & Automation Corporation**

001 (B) Larbaf St., Bruger Subdivision Putatan, Muntinlupa City, 1770

## **Horam-abi Builders , PCAB LICENSE “AAA”**

Horamabi Building Roman Super Highway, Brgy. Tuyo Balanga City Bataan, 2100

## **ARN Builders, Inc., PCAB LICENSE “AAA”**

2/F RM 204 North Gate Centre Gov. Cuenco Ave. Kasamabagan, Cebu City

## **True North Manufacturing Services Corp., PCAB LINCENSE “AAA”**

TECO 6<sup>TH</sup> Floor, Ace Bldg. 101 Rada St., Legaspi Village, Makati City

## **Harmonic System, Inc., PCAB LICENSE “A”**

31 Harmonic Bldg. 5<sup>th</sup> Ave. Barangay Socorro Cubao, Quezon City.

## **LIOA NhatLinh Co., LTD – Ha Noi**

No. 321 Vinh Hung Street, Hoang Mai district, Ha Noi, Vietnam

## **Nan Ya Photonics, Inc.**

Rm. 801, No. 54, Sec. 4, Minsheng E. Rd., Taipei 105, Taiwan

## **Combined Electro-Mechanical Supply Inc., PCAB LICENSE “B”**

14 Ipi-Ipi St. Mahogany Homes Bagumbayan, Taguig City

## **SQUARE D Fabricator & Control Systems Enterprise**

#57 I. Pablo St., Victoria Village East Canumay, Valenzuela City

## **First Top Win International, Inc.**

Sitio Palan, Brgy. San Rafael, San Marcelino, Zambales

## **Starmovers Customs Brokerage International**

#55 Unit B, Remedios Bldg., Roces Ave., Quezon City



# OUR AFFILIATION AND PARTNERS



**TRUE NORTH**  
MANUFACTURING SERVICES CORPORATION



**NAN YA PHOTONICS INC**



MNL Tel. No.: (02) 372-1549 /  
(02) 242-2599 / (02) 242-3008



(+63) 995-071-9864 / (+63)  
926-730-5725



OLG Tel. No.: (047) 611-2679  
[www.mechelecph.com](http://www.mechelecph.com)



[mpsi\\_qc@yahoo.com/](mailto:mpsi_qc@yahoo.com)  
[mpsi\\_subic@yahoo.com](mailto:mpsi_subic@yahoo.com)



**(Manila Office)** Unit 511, Pasda Mansions Bldg., #77 Panay Ave. Corner Timog Ave. Brgy. Paligsahan, Quezon City, Philippines

**(Olongapo Office)** Blk 20 Santol St., Gordon Heights, Olongapo City, Philippines

**(Cebu Office)** 1885 F. Arcilla St., Mabolo, Cebu City, Philippines